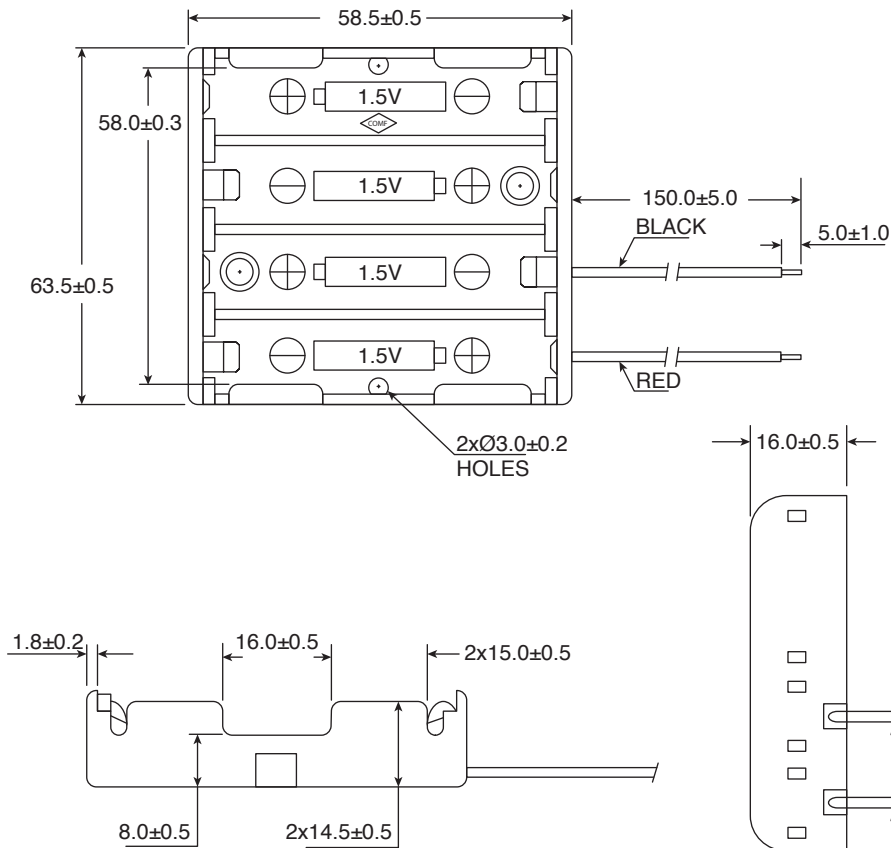
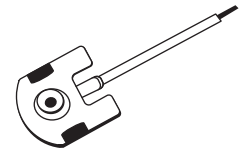


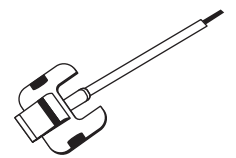
Date Last Revised: 7-1-15



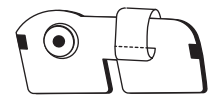
Contact & Wire Assembly



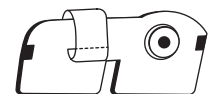
Anode Contact & Wire Combination



Cathode Contact & Wire Combination



Anode Cathode



Cathode Anode

Dimensions: mm

SPECIFICATIONS

Wire:	AWG #26
Holder Material:	P.P. Resin, Black Color
Contact Material:	Anode: 0.25mm Thick Brass Nickel Plated Cathode: 0.25mm Thick Phosphor Bronze Nickel Plated Anode Cathode: 0.20mm Thick Spring Steel Nickel Plated Cathode Anode: 0.20mm Thick Spring Steel Nickel Plated
RoHS Compliant	

Available from Mouser Electronics
1-800-346-6873 / www.mouser.com

EPD-200936